

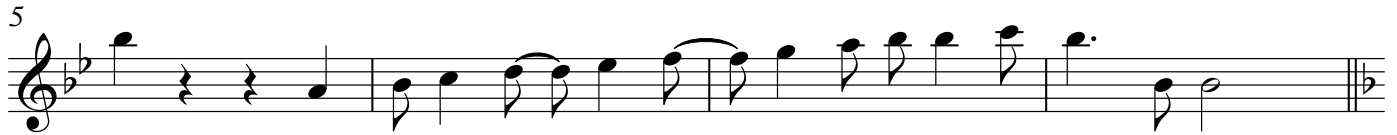
Flute

Mini Etudes #2

Rythmic Development Focus

John McAllister

Etude #1



Etude #2



Etude #3



Etude #4



Mini Etudes #2

Rythmic Development Focus

John McAllister

Etude #1

Musical notation for Etude #1, measures 1-8. The piece is in 4/4 time with a key signature of two flats (Bb and Eb). The melody consists of eighth and quarter notes, ending with a double bar line.

Etude #2

Musical notation for Etude #2, measures 9-15. The piece is in 4/4 time with a key signature of two flats. It features a complex rhythmic pattern of sixteenth and thirty-second notes, with a double bar line at the end of measure 15.

Etude #3

Musical notation for Etude #3, measures 16-23. The piece is in 4/4 time with a key signature of two flats. It features a complex rhythmic pattern of eighth and quarter notes, with a double bar line at the end of measure 23.

Etude #4

Musical notation for Etude #4, measures 24-31. The piece is in 4/4 time with a key signature of three flats (Bb, Eb, and Ab). It features a complex rhythmic pattern of eighth and quarter notes, ending with a double bar line.

Mini Etudes #2

Rythmic Development Focus

Clarinet in B \flat

John McAllister

Etude #1



Etude #2



Etude #3



Etude #4



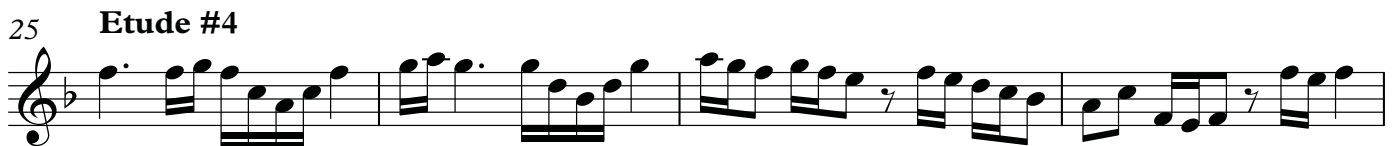
Alto Saxophone

Mini Etudes #2

Rhythmic Development Focus

John McAllister

Etude #1



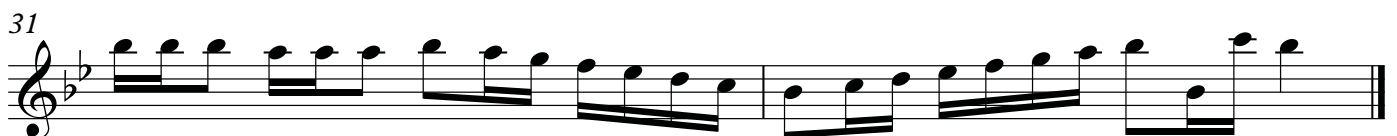
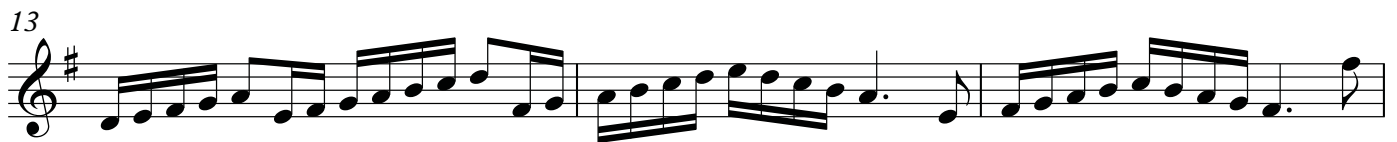
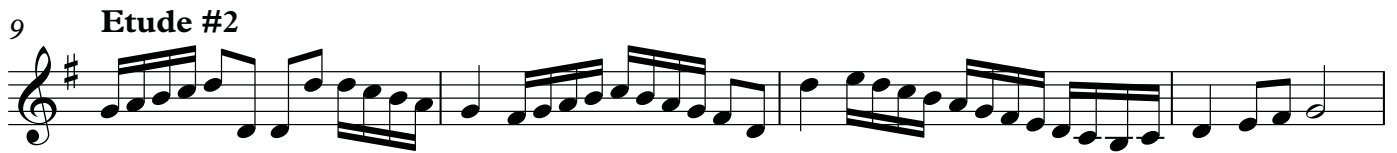
Tenor Saxophone

Mini Etudes #2

Rhythmic Development Focus

John McAllister

Etude #1



Baritone Saxophone

Mini Etudes #2

Rhythmic Development Focus

John McAllister

Etude #1

Musical notation for Etude #1, measures 1-8. The piece is in 4/4 time with a key signature of one sharp (F#). The melody consists of eighth and quarter notes, ending with a double bar line and a key signature change to two sharps (F# and C#).

Etude #2

Musical notation for Etude #2, measures 9-12. The piece is in 4/4 time with a key signature of two sharps (F# and C#). It features a complex rhythmic pattern of sixteenth and thirty-second notes.

Etude #3

Musical notation for Etude #3, measures 13-19. The piece is in 4/4 time with a key signature of two sharps (F# and C#). It features a complex rhythmic pattern of sixteenth and thirty-second notes, including rests.

Etude #4

Musical notation for Etude #4, measures 20-32. The piece is in 4/4 time with a key signature of one flat (Bb). It features a complex rhythmic pattern of sixteenth and thirty-second notes.

Trumpet in B \flat

Mini Etudes #2

Rhythmic Development Focus

John McAllister

Etude #1



Horn in F

Mini Etudes #2

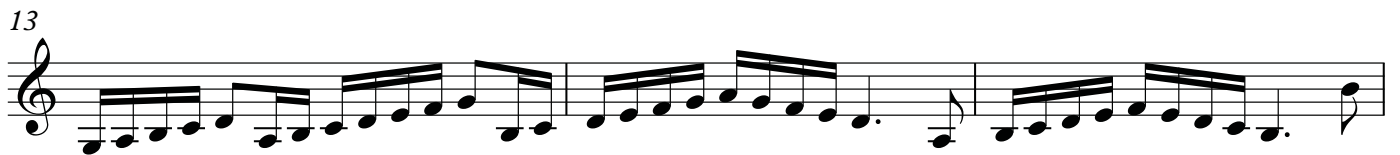
Rythmic Development Focus

John McAllister

Etude #1



Etude #2



Etude #3



Etude #4



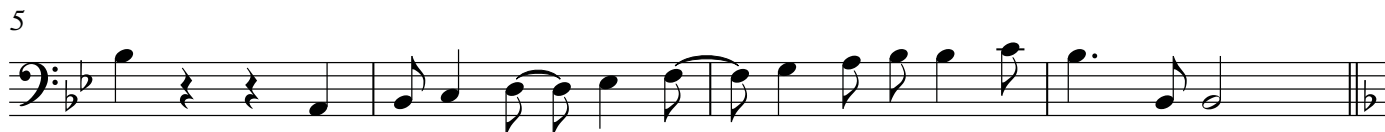
Trombone

Mini Etudes #2

Rythmic Development Focus

John McAllister

Etude #1



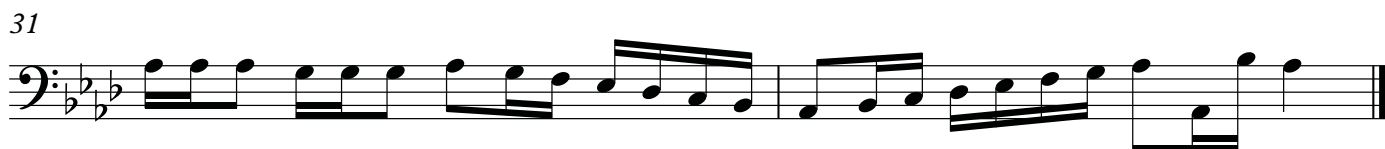
Etude #2



Etude #3



Etude #4



Tuba

Mini Etudes #2

Rythmic Development Focus

John McAllister

Etude #1



9 Etude #2

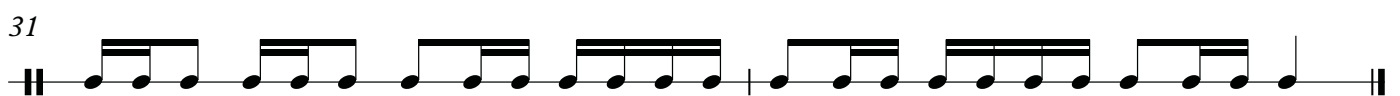
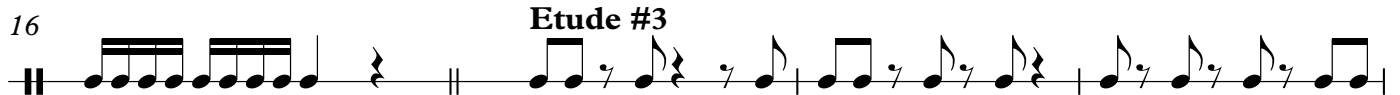


Mini Etudes #2

Rhythmic Development Focus

John McAllister

Etude #1



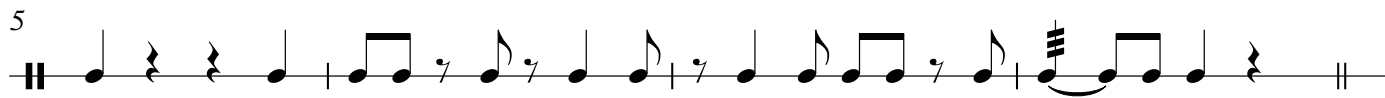
Snare Drum

Mini Etudes #2

Rhythmic Development Focus

John McAllister

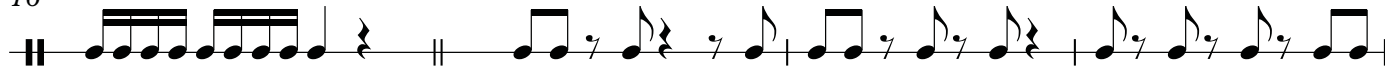
Etude #1



Etude #2



Etude #3



Etude #4

